

Stream Information Summary

Watershed code
Waterbody Identifier
Reach break
Sample site location
Stream anomaly
Fishbearing streams
Support fishbearing streams
Non-fishbearing streams
Support non-fishbearing streams
No defined channel

Physical Characteristics

Enhancement/Management Activities

Feature Summary Symbol

Feature symbol

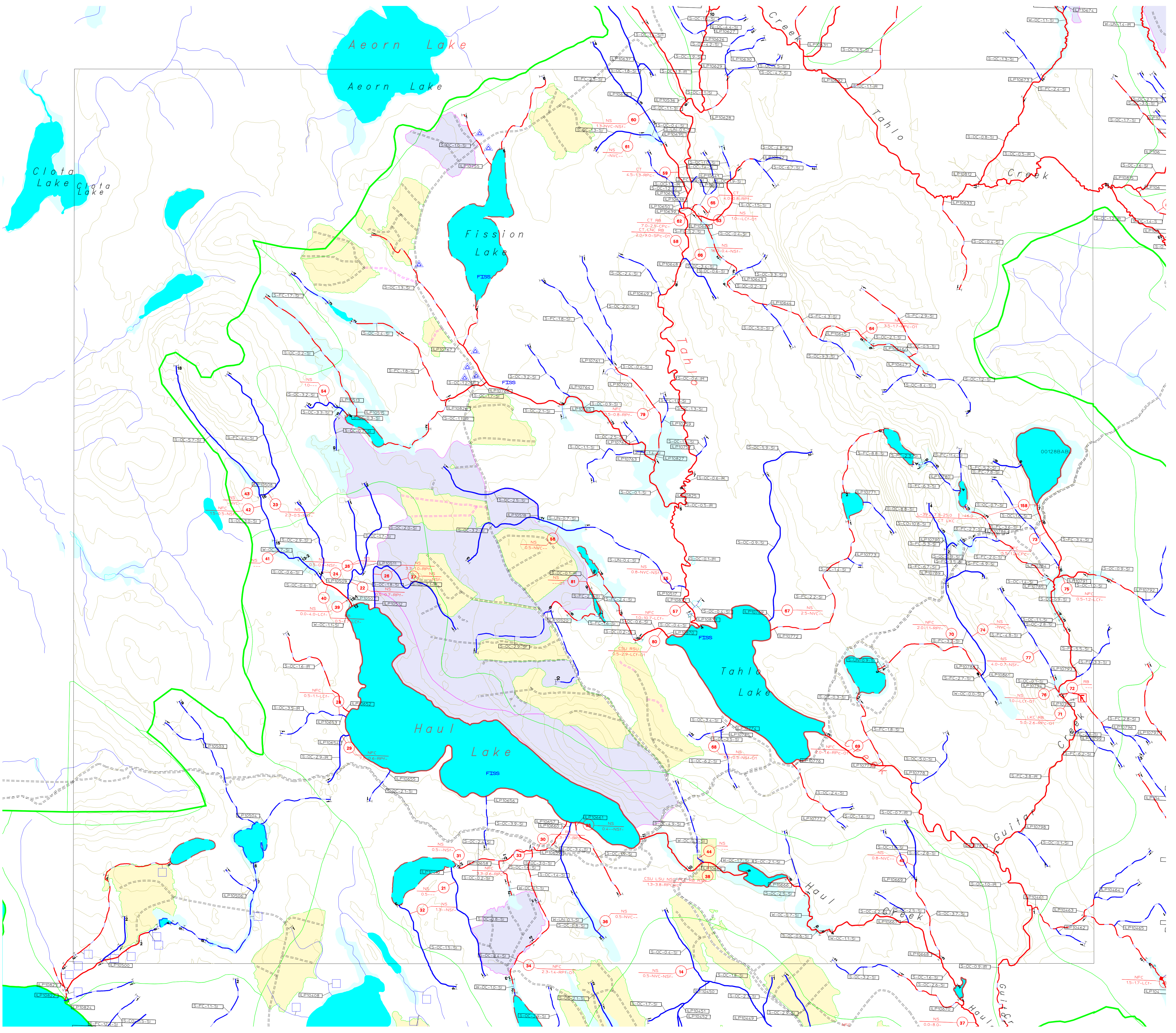
Height — 150 — Length

Reach Summary Symbol

Stream Summary Symbol

Lake Summary Symbol

Other Features



Historic Information Summary

FISH: Federal/Provincial Fish Habitat Inventory and Information Program. 1998. Fisheries Information Summary System Maps. Cited as FISS.

SKR Consultants Ltd. 1996a. Stream classification at selected planned harvest areas in the Morice Forest District: CP 051-2, CP 071-1 and 2, CP 610-1 and 3, CP 560-4, CP 572-2 and 3, CP 453-2, CP 438-1 and 5. Unpublished report prepared for Houston Forest Products Co., Houston, B.C.

SKR Consultants Ltd. 1996b. Stream classification at selected sites in the Tahlo Creek area: CP 585-1 and CP 585-2. Unpublished report prepared for Houston Forest Products Co., Houston, B.C.

SKR Consultants Ltd. 1997. Aquatic stream inventory in the Morrison IRM Unit: CP 527-1, CP 535-3, CP 540-1, CP 540-2, CP 541-3, CP 555-1, CP 555-2, CP 555-3. Unpublished report prepared for Houston Forest Products Co., Houston, B.C.

SKR Consultants Ltd. 1998a. Fish and fish habitat inventory for operational areas in the Morrison Landscape Unit: CP 555-1,2, and 3. Unpublished report prepared for Houston Forest Products Co., Houston, B.C.

SKR Consultants Ltd. 1998b. Fish and fish habitat inventory for operational areas in the Morrison Landscape Unit: CP 529-1, 2, 3 & 4, 3000 Road Extension and West Arm of 3000 Road. Unpublished report prepared for Houston Forest Products Co., Houston, B.C.

SKR Consultants Ltd. 1998c. Letter to Jaret van der Giessen (Houston Forest Products Co.) dated January 13, 1998 regarding: Results for stream inventory and classification for CP 562-2 access road in the Morrison IRM Unit. Letter prepared for Houston Forest Products Co., Houston, B.C.

SKR Consultants Ltd. 1998d. Letter to Jaret van der Giessen (Houston Forest Products Co.) dated January 23, 1998 regarding: Stream classification for streams in and adjacent to CP 541-1 in the Morrison IRM Unit. Letter prepared for Houston Forest Products Co., Houston, B.C.

SKR Consultants Ltd. 1998e. Operational fish and fish habitat inventory in inlet streams to Babine Lake: CP 527-3, CP 527-4, CP 528-2, CP 528-3, CP 539-2, CP 541-1, CP 541-3. Unpublished report prepared for Houston Forest Products Co., Houston, B.C.

SKR Consultants Ltd. 1999a. Operational fish and fish habitat inventory of selected inlet streams to Babine Lake: CP 505-1 and CP 546-1. Unpublished report prepared for Houston Forest Products Co., Houston, B.C.

SKR Consultants Ltd. 1999b. Operational fish and fish habitat inventory of selected tributaries to Tahlo Creek: CP 586-3. Unpublished report prepared for Houston Forest Products Co., Houston, B.C.

SKR Consultants Ltd. 1999c. Operational stream inventory of selected inlet streams to Morrison Lake: Streams in and adjacent to CP 523-3 and CP 563-3 in the Morrison Landscape Unit. Unpublished report prepared for Houston Forest Products Co., Houston, B.C.

SKR Consultants Ltd. 1999d. Operational stream inventory of selected tributaries to Tahlo Creek: Sampling of streams crossed by the proposed extension of Tahlo Main in the Morrison Landscape Unit. Unpublished report prepared for Houston Forest Products Co., Houston, B.C.

SKR Consultants Ltd. 1999e. Operational fish and fish habitat inventory of inlet streams to Tahlo Creek: CP 586-3. Unpublished report prepared for Houston Forest Products Co., Houston, B.C.

SKR Consultants Ltd. 1999f. Operational stream inventory of selected inlet streams to Morrison Lake: Streams in and adjacent to CP 523-3 and CP 563-3 in the Morrison Landscape Unit. Unpublished report prepared for Houston Forest Products Co., Houston, B.C.

SKR Consultants Ltd. 1999g. Operational stream inventory of selected tributaries to Tahlo Creek: Sampling of streams crossed by the proposed extension of Tahlo Main in the Morrison Landscape Unit. Unpublished report prepared for Houston Forest Products Co., Houston, B.C.

Code	Common Name	Code	Common Name
○	Suspected species	MW	Mountain Whitefish
CO	Coho Salmon	NPC	No fish captured
CSU	Largescale Sucker	NS	Not sampled
CT	Cutthroat Trout	NSC	Northern Squawfish
DV	Dolly Varden	PCC	Peanouth Chub
LKC	Lake Chub	RB	Rainbow Trout
LNC	Longnose Dace	RSC	Redside Shiner
LSU	Longnose Sucker		

BASE: TR STR SYM: INV
LOC: EDE LK SYM: INV
HAB: INV
FISH: INV
DATE INV: 1999/09/01 INV MGMT: OTH

The Province has not accepted the contents of this product for the purposes of the Forest Practice Code, and reserves the right to dispute the validity of the information contained herein. The Province does not necessarily agree with the classification assigned to any individual stream reach, for use in logging plans, silvicultural prescriptions or for any other application.